

***"The best classroom and the richest cupboard is  
roofed only by the sky" (McMillan 1925)***

# **Densholme Farm**



## ***Education Pack***

**Everything you need to know about your visit....**



**Rachel Williamson**

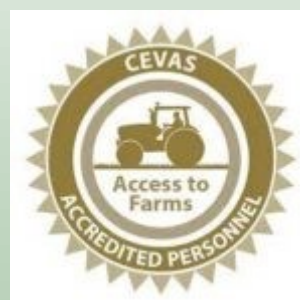
**Senior Education Worker**

**Having worked on farms delivering educational packages for many years I understand that by the time you reach our doors you may have already had a stressful morning! With that in mind we have created this pack to give you a step-by-step guide to planning, booking and undertaking your visit to the farm to make your experience as easy and stress-free as possible!**

**This pack will provide you with all you need to know about your visit, but please do not hesitate to get in touch with us if you have any further questions or queries — We are very happy to help and enjoy making your experience as personal as possible.**

**Densholme Farm provides endless “hands on” learning opportunities and we are always evolving and looking for new ways to inspire learners of all ages and abilities. Hopefully this pack will inspire you to make the most of what we offer and enable us to provide your pupils with a truly unforgettable learning experience in the outdoor classroom.**

**Rachel Williamson**  
**BSc (hons) Zoology**  
**PGCert Sp. Ed. (Autism)**  
**CEVAS QUALIFIED**  
**Senior Education Worker**



# About the farm

**The farm can be subdivided into four main sections:**

- 1. The production of organic crops.**
- 2. Care for the environment.**
- 3. Care farming.**
- 4. Educational visits**



## Organic Crops

Beginning in 2002, one field each year was converted from conventional to organic farming. It takes two years to convert each field and this period helps cleanse the land of previous chemical applications and prepare for the organic crop rotation. Key to this is the planting of nitrogen-fixing clover to add fertility to the soil in the absence of artificial fertilisers. After two or three years, the clover (and livestock that graze it) will have built enough fertility for a crop of wheat to be grown. This will be followed by beans (a legume like clover), then triticale (a cross between wheat and rye) before clover is planted again to add more fertility.

Often we graze another farmer's sheep on the pastures as well as making hay or silage to sustain them in the winter. Sometimes the grass is cut and left to feed the soil. A healthy soil is the organic farmer's main aim.

**Healthy soils = healthy crops = healthy humans.**

We believe that local organic food will play a major part in combating global warming and are seeking to increase our acreage of horticultural produce. We are blessed with some of the finest land in the country for producing such crops. The drawback is it's also very good for growing a fantastic variety of weeds!



# Caring for the Environment

There has been much debate about the health benefits of organic food but there is not much doubt that farming organically is better for the environment. Not only do we not use chemicals that have been formulated to kill or damage plants, fungi or insects but we also have a greater variety of plant life on our farms which attract a greater variety of wildlife.

Through the farm's Higher Level Scheme we have special areas that are designed to attract various species in an attempt to reverse previous declines or to build up numbers. One such area is for wild birds where we have had spectacular success in attracting tree sparrows and corn buntings, both of which are on the 'red list' which means they have suffered substantial declines since the advent of intensive farming methods. Other successes are areas for lapwings, skylarks and grey partridges.

Through selecting plants which provide a rich source of pollen (for protein) and nectar (for sugars) we have had good success in attracting more insects, bumble bees and butterflies, including the common blue and clouded yellow butterflies.



A Comma butterfly and some

In 2009 the Forestry Commission supported us in planting one hectare of woodland. This consists mainly of ash and oak trees but also contains walnut, lime, hazel, crab apple and sweet chestnut. We are looking forward to seeing the woodland develop, hopefully as well as the one and a half miles of hedgerow we have planted over the past five years. This will be a powerhouse for biodiversity—hawthorn, for example, attracts around 209 species of insects. This woodland is often used by us to educate the children on all the flora and fauna that can be found there.

We have also built a mini beast mansion and have a dedicated area for finding insects so children can get up close and find out more about these important creatures and learn about their place in our eco system.

# Care Farming

Our mission statement at Densholme Care Farm is

**‘To Share The Farm With Those Who May Benefit’**

On a Friday the farm becomes a ‘Care Farm’. A group of adults along with our staff team regularly use the farm and experience better mental and physical health as a result of their time spent outdoors, as well as enjoying working as part of a team and making new friends. Daily activities include animal care and horticulture (sensory garden, herb garden, market garden), willow, woodland and orchard work. No day is ever the same at Densholme!



# Educational Visits

The countryside offers invaluable teaching resources. The visit can be used to teach all aspects of the curriculum through learning about farming and the countryside. We hope that this information pack will give you ideas to inspire your pupils and get the most out of your visit. Activities could include:

- Scarecrow building - Whilst learning why we use scarecrows, pupils get to build the scarecrow. pick the clothes, then have a photo
- Borrow our incubator and brooder to hatch out your own chicks - then return them to the farm in timing with your visit—limited availability please book!
- Meeting all of our friendly farm animals including goats, sheep, and pigs, and talking about where our food comes from.
- Meeting our chickens (and chicks subject to time of year) collecting their eggs and learning about their care.  
(KS1 + KS2 SCIENCE Biology – Structure and Function)
- Exploring our woodland and all the mini beasts and wildlife they might meet along the way. Topics can cover (KS1 + KS2 Biology – Structure and Function + Interdependence)
- Access to our outdoor play area. Sitting on a real farm tractor.
- Learning all about the plants and crops that we grow, planting seeds  
(KS1 + KS2 SCIENCE Biology – Structure and Function)
- Visiting our renewable energy windmill site.  
(KS3 SCIENCE Earth and Atmosphere)

We particularly welcome school groups and other community groups to engage with the environment and activities on offer. Here at Densholme Farm you can experience the great outdoors whatever the weather and participate in a range of activities to suit you or your groups' requirements.

If there is a specific topic that you would like to cover, we will request your interests prior to your visit to ensure that your day is suitably tailored. Please note some activities/animals on site are seasonal, and may not be available all year round.

Popular topics include: • Habitats • Caring for animals • Field to fork • Conservation

To enquire about dates, or for more information, please contact us on:

**education@densholmefarm-action.co.uk**

**01964 535315**

# Health and Safety on the Farm

We comply with Health and Safety Regulations. However it is important that all pupils and supervising adults are aware of the correct Health and Safety guidelines. The risk of infection is very small, but disease caused by an infection could be serious. By following simple guidelines, the risk can be easily minimised.

The Industry code of practice has produced guidelines please follow the link for the current guidelines for farmers and for teachers visiting farms

[Code of Practice | Access To Farms \(visitmyfarm.org\)](https://www.visitmyfarm.org)

All animals naturally carry a range of micro-organisms, some of which can be transmitted to humans, causing ill health these are called Zoonosis. Some, such as the bacterium Escherichia coli 0157 (E coli 0157) cause infections which can potentially cause disease, which may be particularly acute in young pupils. At certain times of the year the children may not be able to access the chicken pens due to Avian Influenza regulations.

Teachers/group leaders are responsible for the pupils' behaviour throughout the visit, please maintain the recommended staff-pupil ratios at all times.



The toilet facilities, including a toilet with disabled access and changing places, and extra outdoor hand washing facilities are positioned at the rear of the main barn.

You will be prompted by our staff to wash your hands after any animal/soil contact sessions.

Discuss with the supervisors, who may be parents or staff of the school their role during the visit. They must understand the need to make sure that pupils wash or are helped to wash, their hands thoroughly after contact with animals and follow the other rules suggested on the next page. Hot water and hand towels will be provided.

**During the visit, make sure that the pupils do not kiss animals and always wash their hands thoroughly before eating, after any contact with animals and again before leaving the farm, please leave time enough to allow for this to ensure it is not done in a rush.**

**Pregnant women should avoid contact with the Sheep and Goats that have recently given birth.**



# Health and Safety on the Farm

We have created the following rules to help protect our visitors from harm. Please discuss them with your pupils before visiting the farm.

- They should eat only food that they have brought with them in designated areas, and never eat food which has fallen to the ground or taste animal food.
- Stress that they must not eat or chew except in areas designated for eating.
- Check that cuts, grazes, etc. on pupil's hands are covered with a waterproof dressing.
- Make sure that pupils wear appropriate clothing, long sleeves and trousers are advised (please see information on **ticks on page 9**), including sturdy outdoor shoes (not sandals) or wellington boots if possible
- Please ensure pupils do not suck fingers or put hands, pens, pencils or crayons etc. in their mouths.
- Please check their footwear before leaving, remembering to wash their hands after any contact with animal faeces on their footwear.
- Check that pupils stay in their allocated groups during the visit, and that they do not use or pick up tools (e.g. spades and forks) unless permitted to do so by farm staff and they do not climb on to walls or animal pens bales, or machinery.
- Please listen carefully, and follow the instructions and information given by the farm staff.
- Please approach and handle animals quietly and gently and do not chase, frighten or torment them.

If a member of your group shows signs of illness (e.g. sickness or diarrhoea) after a visit, advise them or their parent/guardian to visit the doctor and explain that they have had recent contact with animals.

## **Risk assessment**

We recommend a pre-visit to our farm, during which you can carry out a risk assessment and become familiar with the site. Any specific requirements or needs of the visiting group can be discussed. A copy of the farm's risk assessment and covid policy is available at

<https://www.densholmefarm-action.co.uk/documentation.php>



# Health and Safety on the Farm

## Covid-19

Since the start of the pandemic we have reduced our maximum class sizes to 34 children which is the capacity of our classroom (which we rely on more when the weather is inclement). This will ensure a better learning experience for the children, reduce the stress on our animals, and make visits safer for our staff and volunteers.

Upon arrival the children and staff will be asked to wash their hands to reduce the passing of any viruses they might unknowingly be carrying to our animals, and in turn we will be carrying our regular hand washing sessions throughout the day to reduce the chances of germs being passed from animals to humans (Zoonotic diseases) which we ask all visitors including adults to participate in, alcohol gel can be used in addition to this prior to lunch if this is your usual protocol.

We ask you to remove all rubbish after lunchtime, but we are happy to provide bags to separate recycling from general waste and for our staff to discuss this with the children prior to lunch we are passionate about protecting our planet from plastic waste, and believe this is an important part of protecting our beautiful countryside.

If any of your students are unwell please advise them to stay at home on the day of the trip.

The link below will take you to our documentation page for further information.

<https://www.densholme-farm-action.co.uk/documentation.php>



**Ticks can be found in any grassy/hedgerow area that has come into contact with animals.**



**Lyme Disease Action**

[www.LymeDiseaseAction.org.uk](http://www.LymeDiseaseAction.org.uk)

## Facts

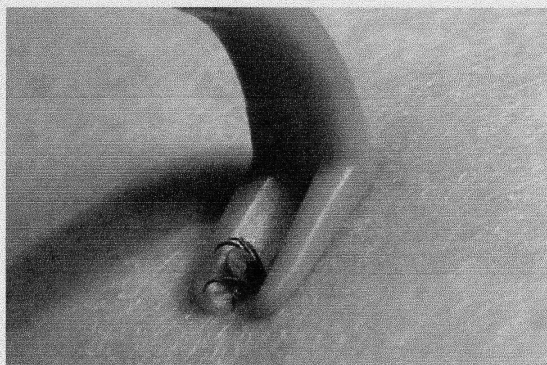
- Lyme disease is present across the UK.
- Lyme disease is transmitted by the bite of an infected tick
- Recent statistics show that case numbers are rising - the actual total is unknown
- Lyme disease is treated with antibiotics, which may be long term
- Testing does not identify all cases
- Tick bites are painless, and can go unnoticed
- Ticks can also carry other diseases

## Quotes

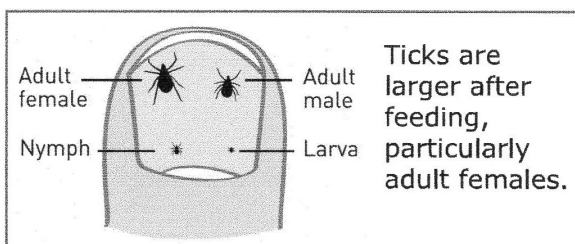
- "My life has essentially been shattered by Lyme"
- "I struggle to look after my children"
- "After a year of debilitating illness I am now much improved after long term treatment"

## Tick removal

- As soon as possible
- DO use a tick removal tool
- DO NOT apply any creams, oils or heat to the tick
- See your doctor if you have any symptoms

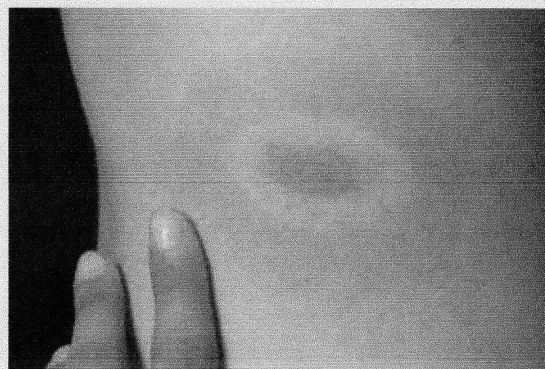


# Lyme Disease in Britain



## Symptoms may include

- Feeling unwell
- Flu-like symptoms
- Extreme fatigue
- Muscle/Joint pain
- Muscle weakness
- Upset digestive system
- Headache
- Disturbances of the nervous system
- Poor sleep
- Sometimes a 'Bull's eye' rash



## Preventing bites

- Keep legs and arms covered
- Try not to brush against vegetation
- Consider using repellent
- Ticks are easier to see on light clothing

**Lyme Disease Action**

PO Box 235, Penryn, Cornwall TR10 8WZ, UK

Registered Charity Number 1100448

Registered Company Number 4839410

For more information and tick removers visit  
[www.LymeDiseaseAction.org.uk](http://www.LymeDiseaseAction.org.uk)



# Staffing Ratios

## Staff: Pupil Ratios

As a general rule, the ratio of supervisors to pupils should be;

- 1:1 for pupils under 1 year old
- 1:2 for pupils between 1 and 2 years old
- 1:3 for pupils between 2 and 3 years old
- 1:4 for pupils between 3 and 5 years old
- 1:8 for those between 5 and 8 years old
- 1:10 for those between 9 and 11 years old
- 1:15 for pupils from 12 years old and above.

**These are examples only and group leaders should assess the risks and consider an appropriate safe supervision level for their particular group.**

**Please ensure your staff and support staff understand that they need to listen to our talks and information being given out. The children will lead by example, if some-one is at the back talking then this will create a distraction which some children may find hard to ignore. We appreciate your support.**



Students learning about wheat production on the farm.

# Package Prices

Please note we have 25 FREE visits available each year under the environmental stewardship scheme, these dates are very popular, please contact us early to secure your booking.

## **Full Day Trip 10.00am - 2.15pm**

- Morning tour/educational sessions (based on learning objectives)
  - Picnic lunch on site (Please bring your own lunch)
    - Access to Play area and Tractors
    - Access to Woodland and Wind farm

**£260 (for up to 20 students)**

**For groups of 20+ each additional student will be charged @ £6.50**

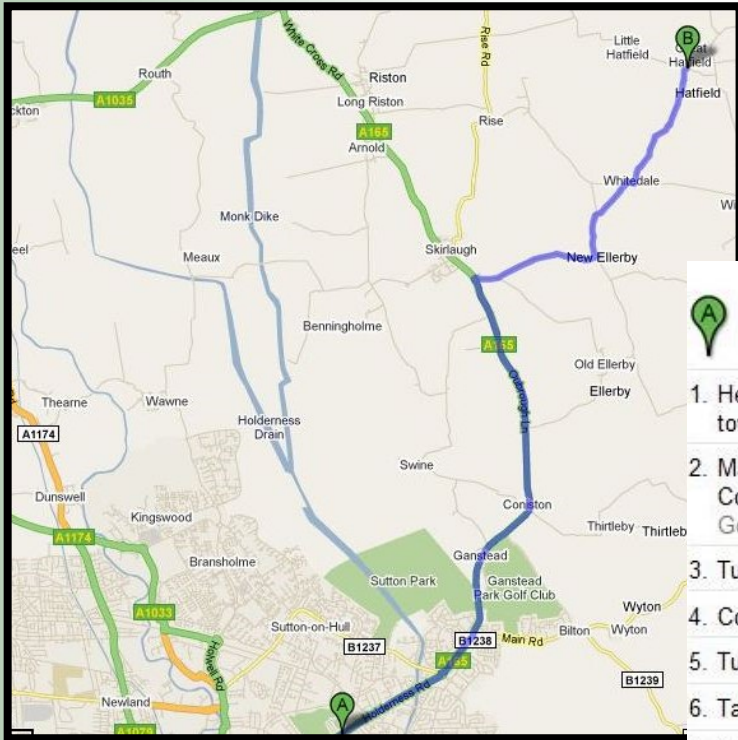
**Staff and supervising adults are FREE**

**Price includes a dedicated education tour leader who will meet your learning objectives and stay with you throughout the day.**



# The Day of your Visit

Densholme Farm, Hull Road, Great Hatfield, HU11 4UX

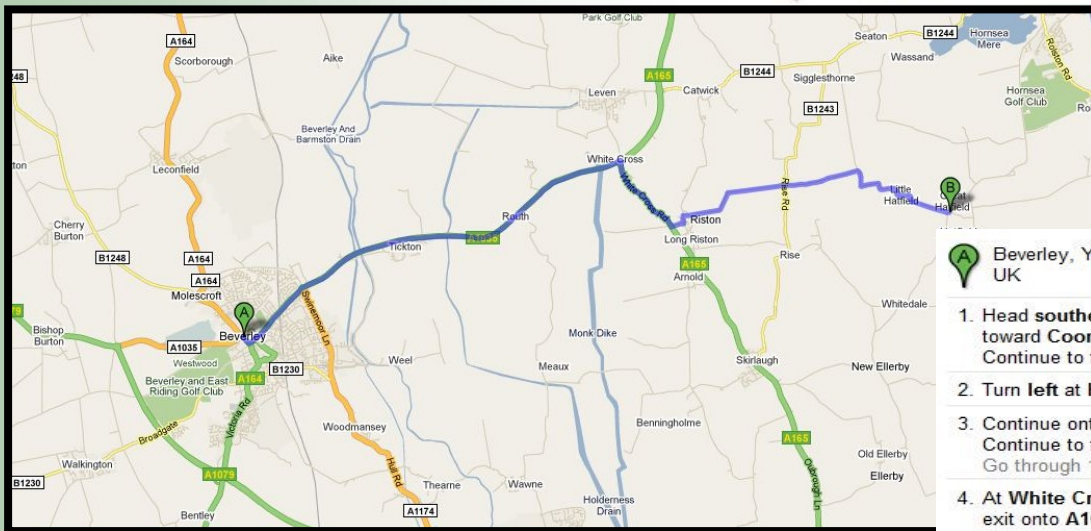


Coming from Hull, head out via Holderness road and follow the Map directions to Hull Road, Great Hatfield.

**A** Holderness Rd  
Hull, North Humberside HU9, UK

1. Head **southwest** on **A165/Holderness Rd** toward **Holderness Rd** 102 ft
2. Make a **U-turn** at **Holderness Rd**  
Continue to follow **A165**  
Go through 2 roundabouts 6.2 mi
3. Turn **right** at **Mulberry Ln** 0.3 mi
4. Continue onto **Langthorpe Rd** 1.2 mi
5. Turn **left** at **Lambwath Ln** 0.5 mi
6. Take the **1st right** onto **Beverley Rd** 0.6 mi
7. Take the **2nd left** toward **Hull Rd** 0.8 mi
8. Continue straight onto **Hull Rd**  
Destination will be on the left 0.7 mi

**B** Hull Rd



From Beverley head out through Norwood and follow the map directions to Hull Rd, Great Hatfield.

[https://www.google.com/maps/search/](https://www.google.com/maps/search/HU11+4UY+Great+Hatfield+Hull+UK/@53.8698081,-0.2030778,215m/data=!3m1!1e3?hl=en)

[HU11+4UY+Great+Hatfield+Hull+UK/@53.8698081,-0.2030778,215m/data=!3m1!1e3?hl=en](https://www.google.com/maps/search/HU11+4UY+Great+Hatfield+Hull+UK/@53.8698081,-0.2030778,215m/data=!3m1!1e3?hl=en) Entrance is second on left after passing the Wrygarth Inn Follow the road around the corner.

**A** Beverley, Yorkshire UK

1. Head **southeast** on **A164/N Bar Without** toward **Coombs Yard**  
Continue to follow **A164** 0.1 mi
2. Turn **left** at **Hengate** 0.1 mi
3. Continue onto **A1035/Norwood**  
Continue to follow **A1035**  
Go through 1 roundabout 5.7 mi
4. At **White Cross Roundabout**, take the **3rd exit** onto **A165/White Cross Rd** 1.2 mi
5. Turn **left** at **Dancing Ln** 0.2 mi
6. Turn **left** at **Catwick Ln** 0.1 mi
7. Take the **3rd right** onto **Whins Ln** 1.5 mi
8. Continue onto **Mill Ln** 0.4 mi
9. Continue onto **Eastfield Ln** 0.6 mi
10. Turn **right** 0.2 mi
11. Take the **1st left** toward **Sigglesthorne Rd** 1.2 mi
12. Continue straight onto **Sigglesthorne Rd** 0.2 mi
13. Slight **left** at **Hull Rd** 112 ft

**B** Hull Rd

# Site Map



Our site was purpose built with safety in mind and there is an easy to follow route which flows around our main paddocks and facilities. We also have a wheelchair accessible pathway around the key areas (highlighted with a thick white line on the map), and a play area suitable for those with low mobility which all children can enjoy. The classroom provides a purpose built space to learn (if required when the weather conditions are poor) and a clean and warm place to eat lunch.

**Please note the farm is not open to the general public and is accessible only to pre-booked groups, staff and the farm team. On the day of your visit you will have a dedicated guide who will remain with and assist you throughout the day.**



# Your Day

Visits start between 10-10.30am and finish between 2-2.15pm (unless otherwise arranged).

Once you arrive at the farm you will be met by a your tour guide who will be with you for the day. They will confirm the topics to be covered with you, discuss any lunchtime arrangements, welcome the children and give a brief talk on health and safety at the farm. Depending on group size you maybe split into 3 smaller groups and then take part in the pre-discussed activities, stopping for breaks and toileting as necessary. The groups will tour the activities on a carousel basis, meeting back up for lunch.

Lunchtime: We offer 30-45 minute slots for lunchtime, which take place between 11.30am — 1pm dependant on the age of the children and their usual routine. Lunches can be left in the classroom, if your coach is not staying, — please carry valuables with you at all times

Food and drinks should only be consumed at break or lunchtimes once children have thoroughly washed their hands. Either before or after lunch, we will also make sure that the children have time to let off some steam in our outdoor play area, during periods of wet weather the suitability of the wooden playground equipment is the choice of the supervising teacher (children must be supervised by teachers/ group leaders at all times).

After lunch and a toilet break we recommend a visit to our wind farm which is a valuable resource to introduce children to renewable energy. Or we can continue with tailored activities on the farm such as wheat grinding, sitting on the tractors or interactive nature based games, subject to the time available.



Please note in connection with our parking facilities Densholme Farm cannot be held responsible for any damage to vehicles or their contents while on the premises.

If you need any further help or advice about your visit, please don't hesitate to contact us!

**Website:      [www.densholmefarm-action.co.uk](http://www.densholmefarm-action.co.uk)**

**Email:      [education@densholmefarm-action.co.uk](mailto:education@densholmefarm-action.co.uk)**

**Telephone:    01964 535315**

